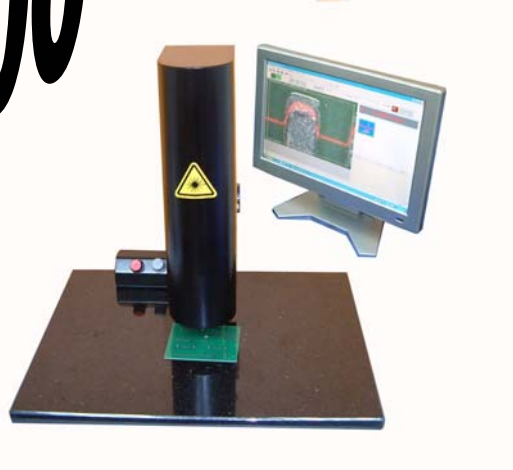


SPT-2000



Picture are subject to changes without notice

*Solder paste thickness inspection
made fast, easy and consistence.*

A good solder paste print is especially important at process critical point such as fine pitch pads and BGA pads where a good quality joint is essential but often difficult to control.

For normal process control, only few critical areas needs close attention and it is often not necessary to conduct 100% in-line inspection of the entire product.

Solder Paste Thickness checker (SPT-2000) is a non contact thickness measurement systems. Ideal for solder pastes, epoxies, inks, masking etc.. It is the ideals tool for continuous process control and monitoring of the solder paste prints. Designed for offline measurement of small and medium sized products.

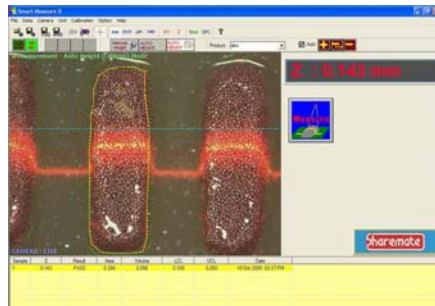
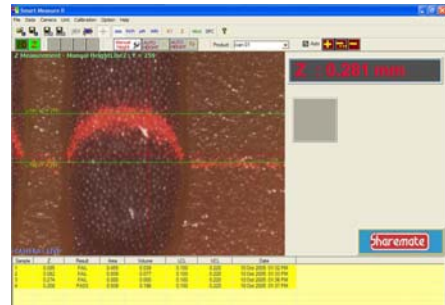
Operator can either inspect the entire PCBs or on the critical regions of the product.

Sharemate

<http://www.sharematech.com>

Features

- Easy and user friendly software.
- Build in the auto measurement function for consistency.
- Magnification of up to 70 time, ideals for 0201 inspection.



- Linear and round measurement function.
- 2D area and 3D volume measurement function.
- Build in pass/fail criteria for immediate result.

- Statistically charts and process data for quality control.
- Upper control and Lower control limits for easy data interpretation.



Specification

Inspection Area	2.2 (mm) by 1.6 (mm) base on 70X on 15" display
Magnification	Up to 70 times
Lighting	LED light source
Laser	Class III laser beam
Camera	IEEE 1394 color camera
Camera resolution	640 X 480
Computer Systems	Intel P4 systems with 1394 firewire port.
Software	Microsoft Windows 2000 or XP.
Resolution	4µm/pixel
Accuracy	4µm
Software	Microsoft Windows 2000 or XP.



<http://www.sharematech.com>

Sharemate Taiwan , Tel:(886) 2-87974188 Fax:(886) 2-87974189 e-mail:sales@sharemate.com.tw

Sharemate Singapore, Tel:(65) 67479238 Fax:(65) 67475939 e-mail: sales@sharemate.com.sg

Sharemate South China, Tel:(86) 769-2336391 Fax:(86) 769-2336395 e-mail: sales@sharematech.com.cn

Sharemate North China, Tel:(86) 512-65527801 Fax:(86) 512-65527803 e-mail: sales@sharemate.com.cn

Sharemate Technology reserves the right to make changes in specifications or modification to any products any time without prior notice or obligation and will not be liable for any consequence resulting from the use of this publication.
All right reserved, May 2006.

SPT/003