

# SPA-1000

## Solder Paste Analyzer



Inspection and reworks on missing component, tombstone, misalignment etc... becoming more and more tedious and time consuming. Made worse with the introduction of smaller components and lead free process.

Managing the inspection and reworks cost will greatly improves the overall profitability of the organization.

Therefore Solder Paste Testing and Analysis forms a very important part to the overall success of today's SMT industry. Solder paste monitoring and process control will slowly but surely integrating into today's electronics industry.

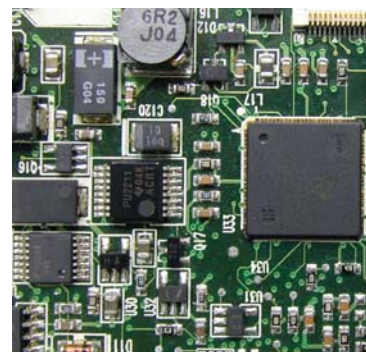
Picture are subject to changes without notice

**Sharemate Technology** new revolution Solder Paste Analyzer (SPA-1000) comprises of number of international test methods. It meant to provide a fast and accurate tools to control and manage the most critical materials in the assembly process, solder paste. The main aim is to reduce defects like missing components, tombstoning, component misalignment, non-wetting etc. This will greatly reduce your inspection and reworks time and cost.

**SPA-1000** is specifically designed to meet the stringent IPC-TM650 Solder paste slumping test, IPC-TM650 Solder balling test, IPC-TM650 Solder paste tack test and IPC-TM650 Solder paste wetting test.

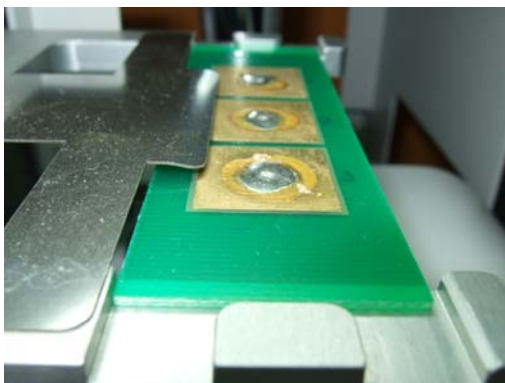
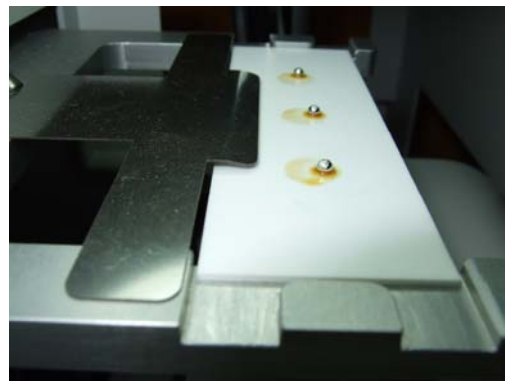
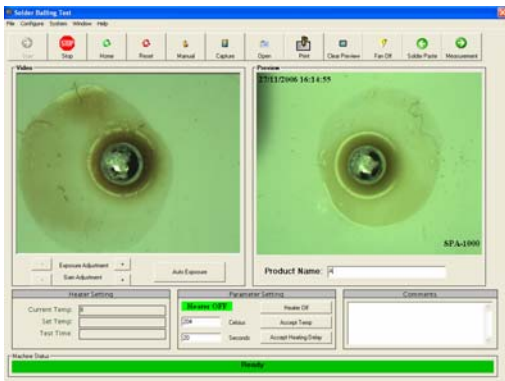
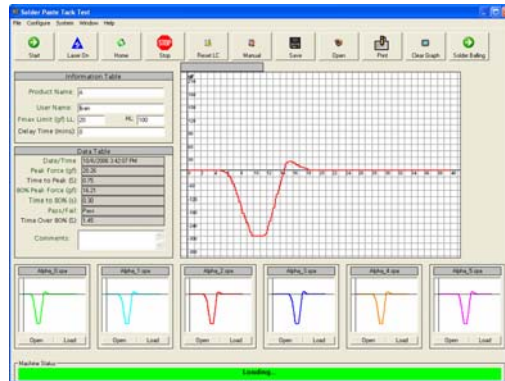
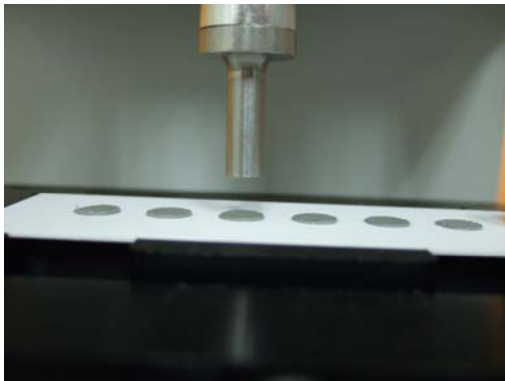
**What is solder paste open time? How will it effect your product quality?**

**SPA-1000** is able to determine the open time of the solder paste under the specific condition. It is a known problems that solder paste perform differently under different production condition. So it is important to determine the specific open time of the solder paste under your production condition.





# System Highlights



Force Measurement Systems	Force Gauge
Accuracy	+/- 0.15% of full scale
Maximum Force Capability	1000 g
Resolution	0.1 g
Z axis motor	Stepper motor
Heating Element	Heater Rods
Camera Magnification	10X and 30X
Image Capture	Yes
Power Supply	240V, 50 Hz.

**Recommended Systems requirements**

- Microsoft Windows 2000/XP
- 2 USB 2.0 ports.
- 1 RS232 port.
- Pentium III or higher with 866 MHZ
- CD-ROM Drive

**Asia Pacific Exclusive Partners:**  
**Sharemate Technology (S) Pte Ltd**

Sharemate Taiwan , Tel:(886) 2-87974188 Fax:(886) 2-87974189 e-mail:sales@sharemate.com.tw

Sharemate Singapore, Tel:(65) 67479238 Fax:(65) 67475939 e-mail: sales@sharemate.com.sg

Sharemate South China, Tel:(86) 769-2336391 Fax:(86) 769-2336395 e-mail: sales@sharemate.com.cn

Sharemate North China, Tel:(86) 512-65527801 Fax:(86) 512-65527803 e-mail: sales@sharemate.com.cn